

特定猟具使用禁止区域一覧表

Table listing specific hunting tool use prohibition zones with columns for number, area name, location, area (ha), and effective period. Includes a total count of 106 zones and 28,869 ha.

鳥獣保護区一覧表

Table listing bird and animal protection zones with columns for number, name, location, area (ha), and effective period. Includes a total count of 54 zones and 189,166 ha.

狩猟鳥獣の種類及び狩猟期間

Table detailing hunting species and seasons, including species names like 'マガモ' and 'クマガリ', and their respective hunting periods.

狩猟鳥獣捕獲禁止区域一覧表

Table listing hunting bird and animal capture prohibition zones with columns for number, name, location, area (ha), and effective period. Includes a total count of 5 zones and 14,911 ha.

指定猟法禁止区域一覧表

Table listing designated hunting method prohibition zones with columns for number, name, location, and area (ha). Includes a total count of 2 zones and 281 ha.

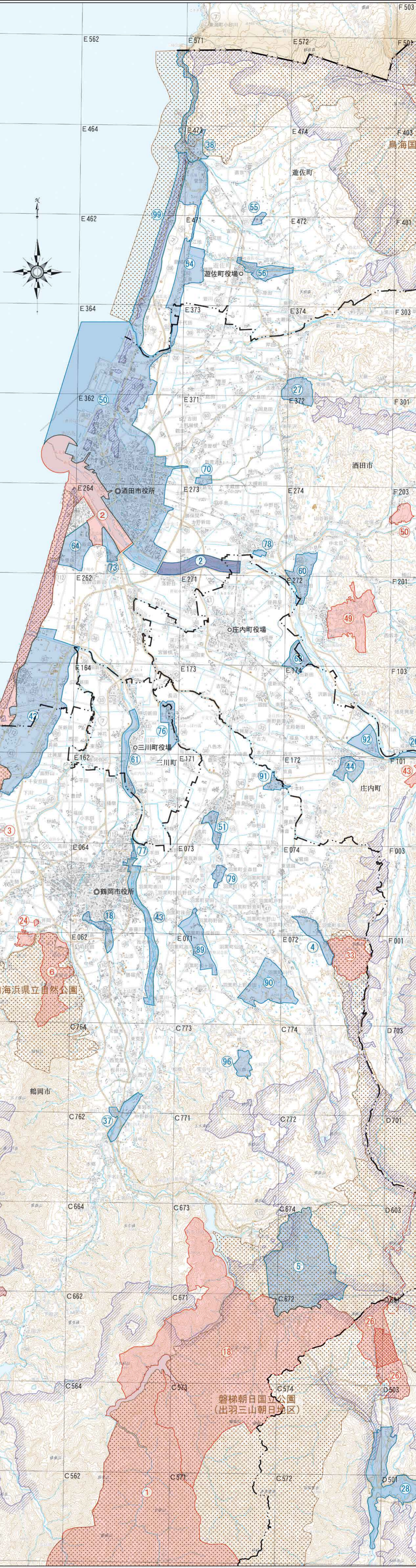
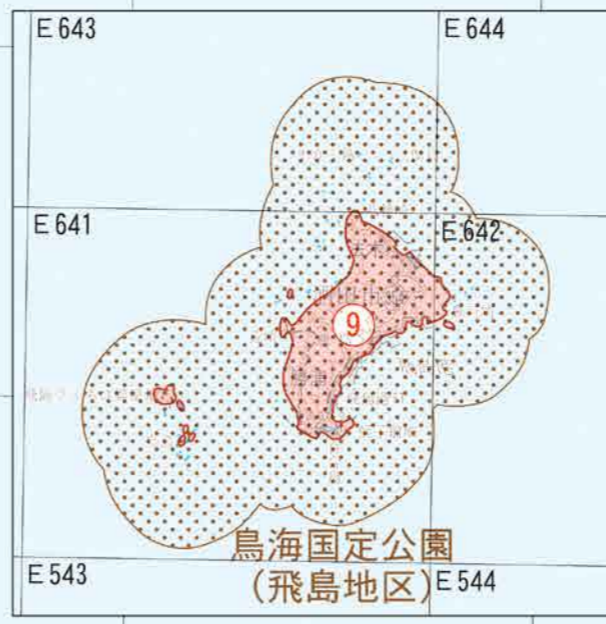
山形県鳥獣行政機関一覧表

Table listing Shiga Prefecture bird and animal administrative organizations, including names and contact information for various offices.

凡例

Legend section defining symbols for national forests, bird and animal protection zones, special protection zones, hunting prohibition zones, designated hunting method prohibition zones, natural parks, and natural park special protection zones.

Tables providing sunrise and sunset times for the 5-year hunting period in Shiga Prefecture, categorized by region and date.



この地図に用いている地域メッシュの図面は、行政管轄表示による標準地域メッシュの5倍地域メッシュであるが、便宜上コード番号の4桁を次の略号で表示した。 A(5639) B(5640) C(5739) D(5740) E(5839) F(5840)